

BPW River City

An edition of the News and Views

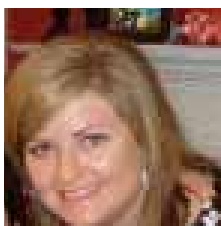
Quote of the Month:

"While no one could accuse fashion of being as serious as, say, brain surgery or the quest for world peace, whether we like it or not, the clothes we wear are an enormously powerful statement that can reveal more about us than anything we may say or do."

— Tamsin Kingswell



December Luncheon:



This is a great month - emphasis on charity. For this month - we chose Elizabeth Bowling from the Ronald McDonald house to come speak with us about the efforts and ministry of the RMH and also let us know who we can help.

It might be something as simple as volunteering a day to bake for the families.

Elizabeth is the Director of Development at Ronald McDonald house charities and Manages activities related to the analysis, planning, execution, and evaluation of fundraising, marketing and public relations programs. In the past, she has worked at the Jewish Community Center and Epilepsy Foundation of Kentucky. While

Ronald McDonald House Charities cannot make medicine taste better or take away painful treatments, we can help lessen the burden and ensure more than 4 million families a year have the stability and re-

sources they need to keep their child healthy and happy.

For more than 35 years, our approach has been to think globally but act locally by tailoring our programs to address the most urgent needs of each community we serve. With a network of local [Chapters](#), our core programs can be found in 52 countries and regions around the globe.



**RONALD McDONALD
HOUSE CHARITIES**

Make Your December Luncheon Reservation Today!

Inside this issue:

| | |
|------------------------|---|
| December Luncheon | 1 |
| Letter from the Prez | 2 |
| Best Buddies | 3 |
| BPW Foundation | 4 |
| Important Dates | 6 |
| December Calendar | 7 |
| Our Corporate Sponsors | 9 |

DECEMBER MONTHLY LUNCHEON MEETING

@
[University Club of Louisville](#)
Cardinal Blvd, (North Entrance
Belknap Campus), Louisville, KY
(502) 852-6996

**Wednesday,
December 8th, 2010**

11:30AM - 1:00 PM

For lunch reservations, email
your reservation to

bpwreserve@gmail.com

Lunch Reservation Deadline:

**Friday,
December 3rd by 4 p.m.!***

If you miss the reservation deadline, you may still attend. The Reservation is for those who intend to have lunch at the meeting. There will be a table for non-eaters at each meeting.

Meeting attendance is free, and open to the public. Lunches are \$20 for members or guests. You

may register in the same manner for a member or a guest, please be sure to specify that the person is a guest.

Be advised: You are financially responsible for any reservation you make whether you (or a guest) attend. Reservations are not required for non-eaters.

Please have checks made out in advance to speed-up the check-in process.



A Letter From the Prez:

Past, Present and Future BPW, River City

Dear BPW Members:

Hope you had a fantastic Thanksgiving and lots of turkey shared with the ones you love.

I would like to make a "special request" for our Holiday Luncheon on Wednesday, December 8, 2010. Instead of giving gift to each other I would like us to make donations to the Georgia Chaffee Teenage Parent Program.

The Program is a Jefferson County Public School for pregnant and parenting teens, grades 6-12. Since 1970, thousands of young women in the Louisville area have overcome many obstacles associated with teen pregnancy by enrolling in TAPP and taking advantage of its comprehensive array of education and support services.

Here is the list of thing needed for the children of TAPP:

Pacifiers; White Wash cloths, bibs; Johnson Baby Oil; Johnson Baby Shampoo;

Gerber 8oz bottles; Diapers; Wet Wipes; & Kroger Gift Cards or Target Gift Cards (\$10-\$25 for students whose families can't afford to feed or cloth the babies).

Happy Holiday and thanks for giving back to our community.

Violet Clark

2010-2011 BPW/RC President
(502) 968-8785 (Home)
(502) 296-5766 (Cell)
Vclark2009@gmail.com



Violet Clark
BPW River City
President,
2010-2011

"I would like to make a 'special request' for our Holiday Luncheon on Wednesday, December 8, 2010. Instead of giving gift to each other I would like us to make donations to the Georgia Chaffee Teenage Parent Program."



Have you been to www.bpwrc.org lately?



Do you want the most up to date information about Business and Professional Women / River City? Check out our new and improved website

at www.bpwrc.org. Be sure to bookmark our webpage. As a BPW/RC member, you will want to visit this site often!

Have you missed an issue of the eNewsletter? You can find it

on our newly updated website. Did you hear about an event at the monthly meeting and want to know more? Visit

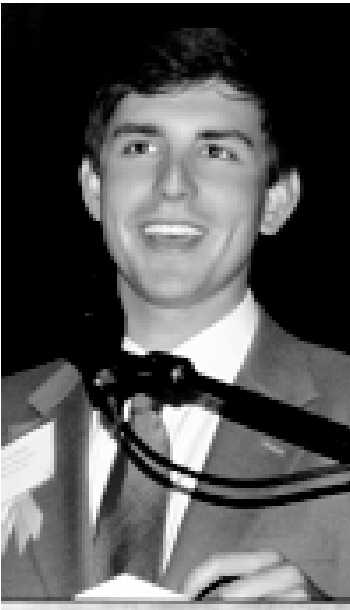
www.bpwrc.org!

Do you have information that

you need to relay to the BPW/RC membership? The BPW/RC website is the way to go!

Contact Malena Kraig at mkraig@insightbb.com for website submissions.

BestBuddiesKentucky.org



Nicholas Phelps of Arison Insurance Services is named the 2010 Champion of the Year!

Congratulations, Nick, for raising more than \$17,000 for Best Buddies Kentucky!

The event was a grand success, raising over \$62,000 to support our Best Buddies programs in Kentucky!

Thank you to everyone who supported this amazing cause,

In the fall of 2010, dynamic community leaders engaged in a seven week fundraising competition to earn Best Buddies Kentucky's "Champion of the Year" title, by raising funds for Best Buddies signature programs helping people with intellectual and developmental disabilities. The 2010 campaign

presented by Blue Grass Audi started with an exciting Kick-Off Party on September 30 at Blue Grass Audi, and the fundraising competition culminated with an Awards Ceremony on Thursday, November 18, 2010, at 6:30 pm at the Sawyer Hayes in Anchorage, Kentucky.



The Candidates

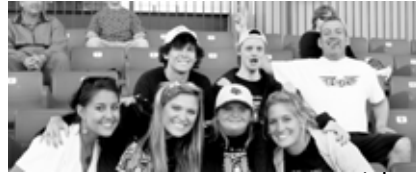
The ideal candidates are business and community leaders who are ambitious, socially active, philanthropic, well-networked, and passionate about making a difference in the lives of people with intellectual and developmental disabilities (IDD). Candidates will receive great recognition in the Louisville market and will have the opportunity to work with a Champion - a person with IDD.



The Colleges

Best Buddies Kentucky has Best Buddies chapters in 10 colleges throughout Kentucky. Each college chapter has students matched with adults with intellectual and developmental disabilities. This fall, each college chapter will compete against another to raise funds for their

activities, training, and mission outreach efforts.



Honorees

All participants will raise funds in honor of a Buddy Hero - a person, adult or child, with an intellectual or developmental disability. Our Buddy Heroes will be passionate about the campaign and can get involved in the campaign's efforts with letter writing, photo opportunities and public speaking. The 2010 Buddy Heroes are Daniel Noltemeyer of Louisville, Kentucky, and Rachel Yussman of La Grange, Kentucky. Check out the "Meet Our Buddy Heroes" tab for biographies on Daniel and Rachel.

The Reason

People with intellectual and developmental disabilities (IDD) have been given many legal rights over the last 50 years, but still feel socially isolated in the communities in which they live. Furthermore, most employers are still not giving individuals with IDD equal opportunities in the workplace.



Champion of the Year Candidates are a part of the solution

to this problem. The funds they raise will help Best Buddies Kentucky, a 501(c)(3) nonprofit organization, match individuals with IDD together with individuals without IDD fostering relationships that can last a lifetime. Best Buddies also provides a supported, integrated jobs program to insure equality in the workplace.

Founded in 1989 by Anthony Kennedy Shriver, Best Buddies is a vibrant, international organization that has grown from one original chapter to more than 1,500 college, high school and middle school campuses around the world. Their seven formal programs - Best Buddies Citizens, Middle Schools, High



Schools, Colleges, e-Buddies®, Jobs and BUILD - will positively impact more than 700,000 individuals this year.

Buddy Hero, Daniel Noltemeyer and 2010 Champion of the Year, Nicholas Phelps



Are You Saving Your Soda Can Tabs?

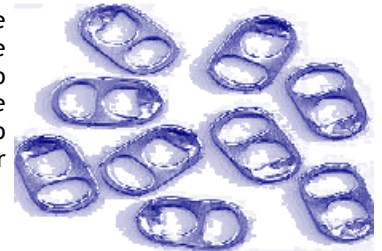


BPW/River City is still collecting soft drink can tabs to do-

nate to the Ronald McDonald House in Louisville. Please bring your tabs to the monthly luncheons and give them to Phyllis Hargrave.

Did you know it is 90% more efficient to recycle aluminum

than to mine it new? We are helping the environment while contributing to families who have a need to stay at the Ronald McDonald House. So far, we have collected over 1,000 pounds of tabs.



An Easy Way to Contribute to the BPW Foundation



The River City BPW Foundation is a separate entity from BPW/River City. The Foundation is a 501(c)(3) organization that raises funds throughout the year to award scholarships to "non-traditional" women and give grants locally toward breast cancer research and education.

One of the easiest ways you can contribute to the Foundation is by participating in our

Kroger Gift Card program. The program works like this:

We have specific Kroger Gift Cards available for purchase. These cards cost \$5 but they already have \$5 loaded on them, so they really cost nothing. When you go to Kroger's, stop by the service desk or even when you are in line to purchase your groceries, have money loaded onto the card. You can do this with cash, check or credit card.

Then, use that same Kroger Gift Card to pay for your groceries, gas or prescrip-

tions. You should continue to use your Kroger Rewards Card that will give you points for reduced gasoline.

Don't throw that card away. Simply reload a monetary value to the card and do your shopping again. You can use the Kroger Gift Card at any Kroger affiliated store, including Jay C.

If you already have one of these Kroger Gift Cards, please consider purchasing one to give to someone else to use.

Using your Kroger Gift card is the easiest way you will ever make a donation to any organization. Every time you use your Kroger Gift Card, all amounts that you place on the card will benefit the RC BPW Foundation. Kroger makes a 4% donation to the organization when cards are used. This costs you nothing. Just remember to keep your BPW issued Kroger Gift Card and use it over and over again. We can all make an impact!

Contact Phyllis Hargrave at 812-944-4411 or UofL_Fan@insightbb.com for more information.

BPW eNewsletter Submission and Distribution



BPW's eNewsletter goal is distribution on the **final Wednesday of every month**. If you would like to include information in the eNewsletter, please submit your announcement or article via email, in paragraph form, in 50 words or less to BPWeNewsletter@aol.com by **7pm on the Friday** prior to that following week's eNews-

letter's release.

ONLY PRE-WRITTEN ARTICLES WILL BE ACCEPTED, and we reserve the right to edit articles for content and/or length.

All submission requests will then be forwarded for approval by a member of the Executive Committee of BPW/RC Board. If approved, announcements will be posted to the next release.

Preference is given to BPW members and sponsors.

By default, all submissions will

be posted on a one-time basis in the next pending BPW eNewsletter. If you require your submission to run more than one time, you will need to include the "run-until" date in your submission request.

Article Submission Ideas: BPW Committee Chair event updates; Announcements of Achievements, Promotions, or Awards from Work, BPW, Civic Groups, etc.; Networking Opportunities; Employment Opportunities.



BPW Foundation, Inc. had a very successful Silent Auction



The River City BPW Foundation, Inc. had a very successful Silent Auction at the "Rising

Flame Competition" and luncheon on October 27th. We are very grateful to all who donated the 35 items that led to the success. Whether you were bidding on the Indianapolis Colts tickets, Breeders Cup tickets or the Box at Churchill Downs, there seemed to be something for everyone. Of course the Champagne, Tea and Liquor Baskets are always a

hit as was the holiday theme baskets. As women, the jewelry, massages and purses are always popular. I guess when you look at the items, it is no wonder we had such a huge success and made \$2,500.

To those who took home the prizes, a big thanks for helping the Foundation secure more scholarships to present to de-

serving, mature women who are returning to college or a technical institute.

Be sure to attend the August Foundation Luncheon to see how thrilled these deserving women are when they accept their scholarship. This is just another way BPW River City demonstrates "Women Helping Women"

Westport TAPP

The Mission of the Georgia Chaffee Teenage Parent Program (TAPP) is to prevent school dropout associated with teen pregnancy by ensuring that all pregnant and parenting students are engaged in tasks that promote higher levels of academic achievement, intellectual development, emotional stability, physical well-being, and self sufficiency. This is accomplished by providing

the following services to Jefferson County students:

- Academic
- Health and Medical
- Social Services
- Child Care

Career/Employment Education

Family Programs Component

The Family Programs Component provides a vast array of services designed to promote social well-being, to develop and maintain positive self-esteem and to teach life skills necessary to the teen parent in relationship to her child, her family and society at-large.

Student Advocates support the

TAPP student through the following:

- * Individual and group counseling
- * Family counseling
- * Crisis-intervention counseling
- * Referrals for community, economic and medical assistance

The Salvation Army: Behind the Red Shield



Please join us for our "Behind the Red Shield" tour.

We are trying to get the word out into the community about our work and get feedback about our programs and services

We are excited about what we are doing and would like to share with you what goes on "Behind the Red Shield" each and every day.

The Salvation Army
Louisville Area Command

Wednesday
December 8th, 2010
12:00pm -1:00pm

911 Brook Street
Louisville, KY 40203
(Old Male High School Campus)

Free Parking available in front of the building and on the North and South sides of the building.

RSVP

502-671-4905

You won't be asked to make a financial contribution, but we

would welcome your advice and feedback.



**DOING
THE MOST
GOOD™**



Important
DATE!

Important Dates to Remember:

December

- 8 Monthly BPW/RC Meeting - [University Club of Louisville](#), Cardinal Blvd, (North Entrance Belknap Campus)
- 20 Full Board Meeting @ USI Insurance, 9700 Ormsby Station Road Suite 200, 5:45-7 :00

January

- 12 Monthly BPW/RC Meeting - [University Club of Louisville](#), Cardinal Blvd,
(North Entrance Belknap Campus)
- 17 Executive Board @ USI Insurance, 9700 Ormsby Station Road Suite 200, 5:45-7 :00

February

- 9 Monthly BPW/RC Meeting - [University Club of Louisville](#), Cardinal Blvd, (North Entrance Belknap Campus)
- 21 Executive Board @ USI Insurance, 9700 Ormsby Station Road Suite 200, 5:45-7 :00

March

- 9 Monthly BPW/RC Meeting - [University Club of Louisville](#), Cardinal Blvd, (North Entrance Belknap Campus)
- 21 Full Board Meeting @ USI Insurance, 9700 Ormsby Station Road Suite 200, 5:45-7 :00

April

- 13 Monthly BPW/RC Meeting - [University Club of Louisville](#), Cardinal Blvd, (North Entrance Belknap Campus)
- 18 Executive Board @ USI Insurance, 9700 Ormsby Station Road Suite 200, 5:45-7 :00

May 1

- 11 Monthly BPW/RC Meeting - [University Club of Louisville](#), Cardinal Blvd, (North Entrance Belknap Campus)
- 16 FINAL Full Board Meeting @ USI Insurance, 9700 Ormsby Station Road Suite 200, 5:45-7 :00



December 2010

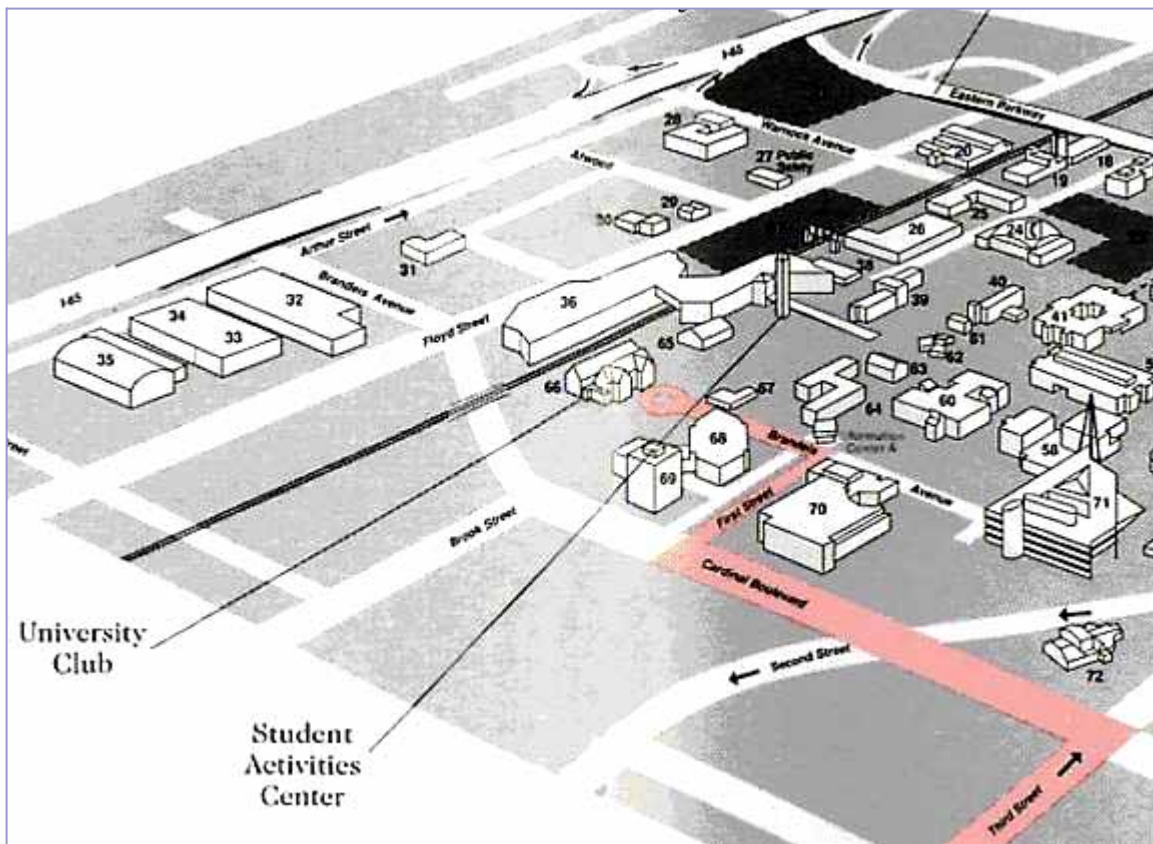
| Sun | Mon | Tue | Wed | Thu | Fri | Sat |
|-----|-------------------------------------------------------------------------------------------------------------------------------------------|-----|------------------------------------------------------------------------------------------------------------------------|-----|------------------------------------------------------------------------------------------------------------------------------------------------|--------------------------------------------------------------------------------------------------------------------------------------------------------------------------------------|
| | | | 1 | 2 | 3 | 4 |
| 5 | 6 | 7 |  12:00 Monthly BPW/RC Meeting @ | 9 | 10 |  www.bpwrc.org Information Submission Deadline |
| 12 | 13 | 14 | 15 | 16 |  E-Newsletter Article Submission Deadline | 18 |
| 19 |  5:45 Executive Board Meeting @ USI Insurance | 21 | E-Newsletter Distribution  | 23 |  | Christmas  |
| 26 | 27 | 28 | 29 | 30 | New Years Eve!  | |



Our Monthly BPW/RC Luncheon Location:



The Club is located on the northeast corner of UofL's Belknap Campus off Cardinal Blvd. Enter at the North Entrance/School of Music and take a left. You will run directly into us. Free parking is located on the left. See map below:



Please note, the University Club is located on Belknap campus which has one address. The physical address of 2001 South Brook St. will not work if you try to search using Mapquest or put into a GPS. If you need assistance give us a call at 852-6996 and we will help.

Google maps provides the best listing and directions:

[Click here for information](#)

[University Club of Louisville](#), Cardinal Blvd, (North Entrance Belknap Campus), Louisville, KY - (502) 852-6996

A VERY SPECIAL THANKS TO OUR 2010-2011 CORPORATE SPONSORS:



KFORCE[®]

TODAY'S Woman

BPW eNewsletter Submission and Distribution

BPW's eNewsletter goal is distribution on the **final Wednesday of every month**. If you would like to include information in the eNewsletter, please submit your announcement via email, in paragraph form, in 50 words or less to vclark2009@gmail.com by 7pm on the Friday prior to that following week's eNewsletter's release. ALL SUBMISSION REQUESTS WILL BE FORWARDED FOR APPROVAL BY A MEMBER OF THE BPW/RC BOARD. If approved, announcements will be posted to the next release. Preference is given to BPW members and sponsors. By default, all submissions will be posted on a one-time basis in the next pending BPW eNewsletter. If you require your submission to run more than one time, you will need to include the "run-until" date in your submission request.