

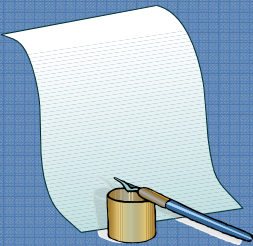


# BPW River City

## Quote of the Month:

*"Leadership is the art of getting someone else to do something you want done because he wants to do it."*

Dwight Eisenhower



## Inside this Issue:

May Luncheon	1
Letter from the Prez	2
Military Awareness	3
BPW Foundation	4
Important Dates	5
Our Corporate Sponsors	6
Events Around Town	7
BPW Scholarship Application	8

## May Luncheon BPW/RC Awards and Recognition



**Come celebrate a great year of inspiring women! Recognition will be given to those who have participated in the BPW/RC program over the 2010-2011 year!**



## Make your May Luncheon Reservation Today!

### MAY MONTHLY LUNCHEON MEETING

@

University Club of  
Louisville

[www.uclublouisville.org](http://www.uclublouisville.org)

Cardinal Blvd, (North  
Entrance Belknap  
Campus) Louisville, KY  
(502) 852-6996

**Wednesday,**

**May 11th, 2011**

**11:30am – 1:00pm**

For lunch reservations,  
email your request to  
[bpwreserve@gmail.com](mailto:bpwreserve@gmail.com)

Lunch Reservation

Deadline:

**Friday March 6<sup>th</sup> by 4pm!\***

If you miss the reservation deadline, you may still attend. The Reservation is for those who intend to have lunch at the meeting. There will be a table for non-eaters at each meeting.

Meeting attendance is free and open to the public. Lunches are \$20 for members or guests. You may register in the same manner for a member or a guest, please be sure to specify that the person is a guest.

**Be Advised:** You are financially responsible for any reservation you make whether you (or a guest) attend. Reservations are not required for non-eaters.

Please have checks made out in advance to speed-up the check-in process.



## A Letter From the Prez:



*Violet Clark  
BPW River City  
President,  
2010-2011*

---

**Join us for our MINGLE  
WITH THE MEMBERS  
Event on May 17<sup>th</sup> at  
Chuy's!**

Dear Members:

I can't believe this year is almost over! I want to thank all of our members who have served on the BPW Board. You have all put a tremendous amount of time and energy into BPW/RC this year.

I would like to combine our last board meeting with our "Mingle with the Members" event. You are all invited to attend on Tuesday, May 17<sup>th</sup> at "Chuy's" from 5:30 – 7:00pm. We will conduct a very short meeting and then enjoy our mingling! Please bring a friend so that they have the opportunity to get to know us as well as what the BPW/RC organization stands for.

Our May luncheon meeting will include awards as well as another exciting Networking session! Be sure to bring your business cards and a friend! Jennifer Morrison will be coming on as your 2011-2012 President. I encourage everyone to support her by offering to volunteer on a project of committee. If we are to continue to be successful, we will need more involvement from our membership.

I have thoroughly enjoyed serving as your President and I look forward to continued participation!

Violet Clark  
2010-2011 President  
(502) 968-8785  
Cell (502) 296-5766

## Have you been to [www.bpwrc.org](http://www.bpwrc.org) lately?

Do you want the most up to date information about Business and Professional Women/River City? Check out our new and improved website at [www.bpwrc.org](http://www.bpwrc.org). Be sure to bookmark our webpage. As a BPW/RC member, you will want to visit this site often! Have you missed an issue of the eNewsletter? You can find it on our newly updated website. Did you hear about an event at the monthly meeting and want to know more? Visit [www.bpwrc.org](http://www.bpwrc.org)!

Do you have information you need to relay to the BPW/RC membership? The BPW/RC website is the way to go!

Contact Malena Kraig at [mkraig@gmail.com](mailto:mkraig@gmail.com) for website submissions.



The month of May is Military Awareness Month.

By Bonny and Bob Manning

It's been said that the military is at war and the American people are "at the mall". As we go about our daily lives, it's important to remember that our military families have a single focus. The safety and wellbeing of their loved ones, deployed far away.

That's where USA Cares comes in. USA Cares exists to help bear the burdens of service by providing post-9/11 military families with financial and advocacy support in their time of need. USA Cares not only provides support for the combat injured, they also help keep families from foreclosure or simply help them catch up on their bills.

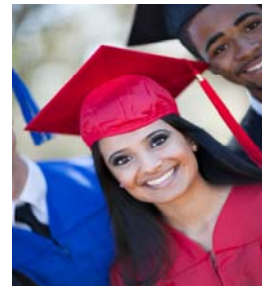
Since 2003, USA Cares has responded to over **28,000** requests for assistance with more than **\$7,700,000** in direct support grants. During this time, over 2,500 children have been saved from loss of a family home. You can help. Go to [www.usacares.org](http://www.usacares.org) and read the success stories. USA Cares, providing a hand-up, not a hand-out to our military families.

Remember the families of the women and men protecting us every day. What a country and God Bless America.

## **BPW Scholarship Opportunity: DEADLINE MAY 30TH!**

**BPW Scholarships will be awarded in August for the 2011 – 2012 school year. You will find the application attached to this newsletter.**

- **Women 25 years of age or older by July 1<sup>st</sup>.**
- **US Citizen and a resident of the Louisville Metropolitan area.**
- **Evidence of acceptance into an accredited program.**
- **Need financial assistance to complete education or improve skills**



**Applications need not be BPW members or require endorsement of a BPW affiliate. Please pass this information along to all women who meet the above qualifications. Call Alex Rohleder 429-8223 for information or questions. The deadline is May 30<sup>th</sup>.**



***"Remember, every time you take part in a foundation fund raiser, you are growing our scholarship program..."***

### Good News from the BPW Foundation:

As you may be aware, the River City BPW Foundation, a separate entity from BPW/River City, Inc., has a fund raiser in conjunction with the Kroger Company. Kroger Cards are available for purchase for \$5.00. These cards have \$5.00 on them, so they basically cost you, the consumer, nothing.

When you purchase one of these cards, every time you put money on the card for your future purchases, the Foundation receives a 4% donation of the money on the card.

We have "sold" about 40 cards, but to date, only 15 people are actually putting money on the cards and using them. Just buying the card from the Foundation does not help at all. We really need for you to put money on the card and use the card

for your purchases.

You can reload money on the card and continue to use that same card over and over. There is no expiration date on the card. The cards can be used to purchase groceries, gas, prescriptions, or anything sold by Kroger and their affiliates (JayC, etc.) If you have multiple cards, consider giving one to your husband and/or children to use for gas and other purchases.

We recently received \$252.52 from our Kroger Card usage. Every time we go over \$5,000 in sales, Kroger sends us a check for 4% of the total. If we could get the many of you who purchased a card or were given ones to reload their cards, we would be sitting pretty. The \$252.52 can be half of a scholarship, yeah!

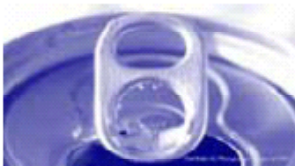
The really cool thing

about this program is that it costs you absolutely nothing to participate, yet each time you use the Kroger Card, you are making a contribution to women in our community! That's pretty cool!

On another high note, the Foundation has received 4 letters from women with breast cancer that took part in the massage program at Floyd Memorial Hospital from the grant they received from Links For Life/Foundation.

**Remember** - Every time you take part in a Foundation fund raiser, you are growing our scholarship program and/or giving grants to agencies, hospitals, organization that do research, education, treatment for breast cancer.

## Are You Saving Your Soda Can Tabs?

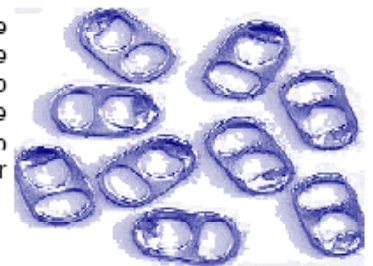


BPW/River City is still collecting soft drink can tabs to do-

nate to the Ronald McDonald House in Louisville. Please bring your tabs to the monthly luncheons and give them to Phyllis Hargrave.

Did you know it is 90% more efficient to recycle aluminum

than to mine it new? We are helping the environment while contributing to families who have a need to stay at the Ronald McDonald House. So far, we have collected over 1,000 pounds of tabs.



## BPW eNewsletter Submission and Distribution



letter's release.

**ONLY PRE-WRITTEN ARTICLES WILL BE ACCEPTED**, and we reserve the right to edit articles for content and/or length.

All submission requests will then be forwarded for approval by a member of the Executive Committee of BPW/RC Board. If approved, announcements will be posted to the next release.

Preference is given to BPW members and sponsors.

By default, all submissions will

be posted on a one-time basis in the next pending BPW eNewsletter. If you require your submission to run more than one time, you will need to include the "run-until" date in your submission request.

Article Submission Ideas: BPW Committee Chair event updates; Announcements of Achievements, Promotions, or Awards from Work, BPW, Civic Groups, etc.; Networking Opportunities; Employment Opportunities.



BPW's eNewsletter goal is distribution on the final Wednesday of every month. If you would like to include information in the eNewsletter, please submit your announcement or article via email, in paragraph form, in 50 words or less to [BPWeNewsletter@aol.com](mailto:BPWeNewsletter@aol.com) by 7pm on the Friday prior to that following week's eNews-

### IMPORTANT DATES TO REMEMBER:



#### May

- 11<sup>th</sup> Monthly BPW/RC Meeting – [University Club of Louisville](#), Cardinal Blvd, (North Entrance Belknap Campus)
- 17<sup>th</sup> FINAL Board Meeting @ Chuy's followed by "Mingle with the Members" from 5:30 – 7:00pm
- 30<sup>th</sup> Deadline for BPW Scholarship Applications

#### June

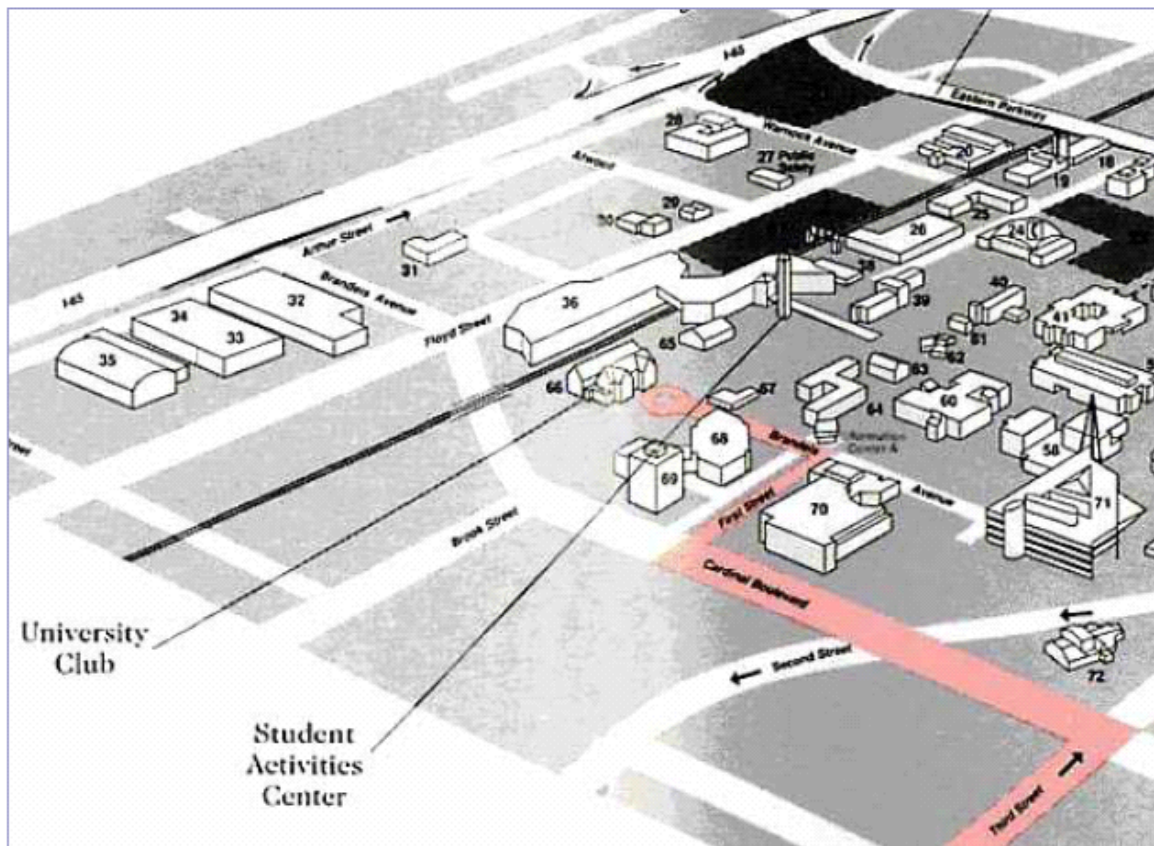
- 8<sup>th</sup> Monthly BPW/RC Meeting – [University Club of Louisville](#), Cardinal Blvd, (North Entrance Belknap Campus)
- 20<sup>tg</sup> Board Meeting @ USI Insurance (Ormsby Station Rd) from 5:45 – 7:00 pm



## Our Monthly BPW/RC Luncheon Location:



The Club is located on the northeast corner of UofL's Belknap Campus off Cardinal Blvd. Enter at the North Entrance/School of Music and take a left. You will run directly into us. Free parking is located on the left. See map below:



Please note, the University Club is located on Belknap campus which has one address. The physical address of 2001 South Brook St. will not work if you try to search using Mapquest or put into a GPS. If you need assistance give us a call at 852-6996 and we will help.

**Google maps provides the best listing and directions:**

[Click here for information](#)

[University Club of Louisville](#), Cardinal Blvd, (North Entrance Belknap Campus), Louisville, KY - (502) 852-6996

A VERY SPECIAL THANKS TO OUR 2010-2011 CORPORATE SPONSORS:



**KFORCE**<sup>®</sup>

**TODAY'S Woman**

***BPW eNewsletter Submission and Distribution***

BPW's eNewsletter goal is distribution on the final Wednesday of every month. If you would like to include information in the eNewsletter, please submit your announcement via email, in paragraph form, in 50 words or less to [vclark2009@gmail.com](mailto:vclark2009@gmail.com) by 7pm on the Friday prior to that following week's eNewsletter's release. ALL SUBMISSION REQUESTS WILL BE FORWARDED FOR APPROVAL BY A MEMBER OF THE BPW/RC BOARD. If approved, announcements will be posted to the next release. Preference is given to BPW members and sponsors. By default, all submissions will be posted on a one-time basis in the next pending BPW eNewsletter. If you require your submission to run more than one time, you will need to include the "run-until" date in your submission request.

louisville magazine

may

# launch party

wednesday, may 4

5:30-7:30 pm

join us at

## 60 west bistro & martini bar

3939 Shelbyville Road  
60westbistro.com

drink specials & free appetizers  
& half-priced bottles of wine

you don't have to  
go to the track to win big

enter to **win**

week-long tickets for two to the  
2nd Senior PGA Championship at Valhalla

**also**

two tickets to Abbey Road on the River

