

The Echo

Glasgow B&PW
Newsletter

September
Issues 4

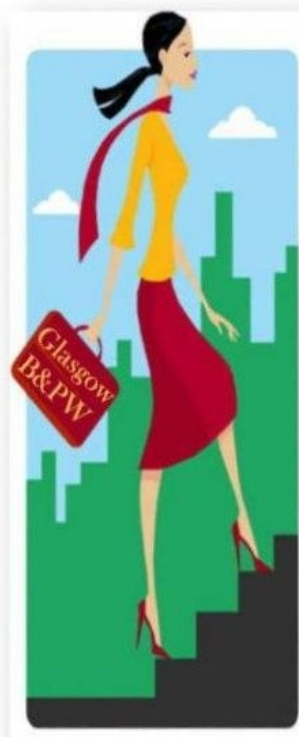
President's Message Betty Driver

Hello Glasgow B&PW Sisters! It is hard to believe that summer is coming to an end and school has started.

Hats off to Annetta Hunter, membership chair, and her committee for having nearly fifty members and guests attending the wonderful Hawaiian Luau to kick off our membership drive along with raising \$660 for the Community Medical Care. The club gained seven new members making a total of ten who have joined since our new club year. Continue to invite guests. Great job ladies!!!!

A recap of a very busy August. On August 1st, eight members had the

opportunity to meet with Janet Johnson, host of Family Lifestyles, with WPBM Station out of Scottsville, KY. You may view the taping on Glasgow B&PW Face book page. The book club had dinner and took in a movie, "The Help", held a baby shower for member, Ashley Estes, Joanne London held a voter's registration drive, and 13 members met on the door steps of the courthouse to celebrate the passage of the 19th amendment granting women the right to vote over 91 years ago. As the summer is winding down and the Arts, Crafts, and Gifts Fair committee, co-chaired by Vonda Pace and Candice Overstreet, have been busy preparing for this big fundraiser event. Please promote this event in anyway



possible. All of us need to pay tribute and express appreciation to these individuals who volunteer to assume these positions to make this club a better organization.

September Meeting—Make your Reservation

I'm looking forward to seeing all of you at our September 1st meeting at the Glasgow Golf and Country Club at 6:00 p.m. The program will also be the first class of the Professional Development Program and will feature Janet Johnson, Allen Co/Scottsville Extension Agent, and regular pre-

senter on WPBM. She will be presenting the module on "Media Presentations" using eight of our B&PW members in her lesson. You'll just have to come and bring a guest to see this. Please **RSVP for you and the number of guests** by 5:00 p.m. Tuesday, August 30th to Annetta Hunter at 834-0180 (cell) or

cookiealh@yahoo.com for reservations. If on the automatic RSVP list, you only need to let Annetta know if you will **NOT attend** the meeting. Please have checks made out in advance (13.50) to speed-up the check-in process. I encourage you to be there and bring a guest or two. See you there!

2011-2012 Glasgow B&PW Executive Board

President
Betty Driver
H 651-6477 C 590-8490
bbdriver@glasgow-ky.com

President Elect
Sherrie Burgess
H 646-3598 W 651-7560
sburgess@scrtc.com

Vice President
Annetta Hunter
H 844-4776 C 834-0180
cookiealh@yahoo.com

Recording Secretary
Debbie McCandless
H 834-8505 W 678-2723
dmccandless@glasgow-ky.com

Treasurer
Dawn Boyter
H 651-8414 W 651-6159
dboyter@glasgow-ky.com

Parliamentarian
Krissie Coe Fields
H 651-1575 W 651-2561
kfields@glasgow-ky.com

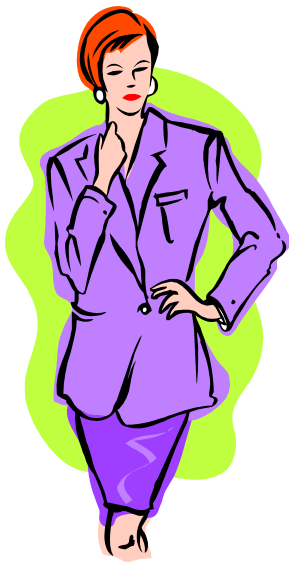
Inside 2
PDP
KFBPW Mission
Gynecologic Cancer

Inside 3
Automatic RSVP
Important B&PW Dates
Birthdays

Inside 4 & 5

Photo Gallery

Editor — Betty Driver



Professional Development Program

Our Professional Development Program is coming up in September. I am excited at the potential we have to help develop women through this program. The program is a series of Ten Leadership Training Modules to help us understand our leadership style, identify personality traits as well as our own “personal

brand.” It teaches many things such as public speaking and how to give a professional presentation. If speaking in front of a group is a challenge for you, Georgia Beth will make it easy and fun. It will truly be a learning experience that these modules will help fourteen members set and

reach professional and personal goals. Glasgow B&PW has a history of empowering women to serve as leaders in this communities and businesses. This **KFBPW** signature event is huge for our club to offer this event to our members. It is truly an exciting time to be a B&PW member.



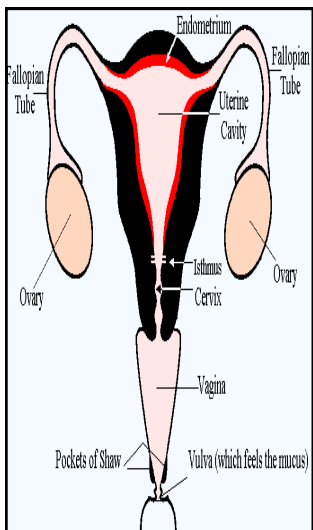
Legislative Committee Mission Statement

The mission of the Kentucky Federation of Business and Professional Women's Clubs, Inc, is to achieve equity for all women in the workplace through advocacy, education and information. KFBPW's vision is to be the leading advocate for working women. The Alice Paul

Equal Rights Amendment shall stand first, foremost, and above all other items which may appear on the state platform of this Federation until equal, legal rights for women and men become guaranteed in the United States Constitution, because all statutory law derives

there from. **The Alice Paul Equal Rights Amendment.** Equality of rights under the law shall not be denied or abridged by the United States or by any state on account of sex. Next month we will continue with information listing the KFBPW Legislative Platform.

Gynecologic Cancer



Gynecologic cancers begins in different places within a woman's pelvic, which is the area below the stomach and in between the hip bones. **Five main Types:** Cervical - begins in the cervix, which is the lower, narrow end of the uterus. Ovarian — begins in the ovaries, which are located on each side of the uterus. Uterine — begins in the uterus, pear-shaped organ in a woman's pelvis where the

baby grows when a woman is pregnant. Vaginal — begins in the vagina, a hollow, tube-like channel between the boltom of the uterus and the outside of the body. Vulva — begin in the vulva, outer part of the female genital organs. Each gynecologic cancer is unique, with different sign and symptoms. All woman are at risk and the risk increase with age. When cancers are found early, treatment is most effective. In 2007 (most

recent year numbers are available). 80,976 women in US were diagnosed with gynecologic cancer . 27,739 died from gynecologic cancers. Causes & risk factors: Age, race, & family history, Des exposure (synthetic estrogen given to women before 1971 during pregnancy to prevent miscarriage), smoking, HPV, HIV, & aids infections. **BE BRAVE. ASK YOUR DOCTOR QUESTIONS!**



Automatic RSVP List

For your convenience, you may sign up on the **automatic RSVP** option list at any time, just indicate in your reply to Annetta. Below is the list of members who have signed up for this option. These people only need to let Annetta know if they are **NOT** attending the meeting. **Let her know if you will bring a guest.** Unless sick, you are financially responsible for any reservations you make whether you (or a guest) at-

Annetta Hunter
Becky Barrick
Betty Driver
Cathy Doty
Courtney Benefield
Davie Greer
Dawn Boyter
Debra McCandless

Georgia Beth Albany
Helen Simpson
Janis Turner
Jennie Wilson
Jewel Searcy
Julie Edwards
Krissee Coe Fields
Ledeane Hamilton

Mary Beth Jessie
Melanie Watson
Norma Redford
Sandy Leitao
Sondra Cook
Sherrie Burgess
Yvonne Martin



Important B&PW Dates

August 29th — September 2nd — Twenty four B&PW members will be working "To The Brim" Community Wide Food Drive at Houchens at Southgate.

August 30th, 2011 — The Executive Committee will meet at Main Street Bed & Breakfast at 5:30. .

September 1st, 2011 —

Our regular meeting will be held at 6:00 pm at the Glasgow Golf and Country Club.

September 6, 13, 20, and 27 — Fourteen B&PW members will attend the Professional Development Program at the South Central Bank Operations Center on the By-Pass from 5:30 (eat) to 8:15 or 8:30.

September 9th, 2011 — Bobby Driver Memorial Scholarship Fund presents Glen Rice and Friends at Plaza Theatre at 6:45 p.m.

September 15th, 2011 — KY Cardinal deadline.

September 24th, 2011 — Arts, Crafts & Gifts Fair to be held on the Square in Glasgow.

September 26th, 2011 — The Book club will be meeting at the public library at 6:30 pm. They will read J. C. Dugard's, "The Stolen Life." this month and discuss at the meeting.

HAPPY BIRTHDAY

We only have two Birthday ladies this month.

Jewel Searcy — September 16th

Linda Stephenson — September 22nd

" It's
amazing
what can be
accomplished
if the leader
doesn't care
who gets the
credit."
Mark Twain



*Pictures of Eight members on WPBM Station
Hawaiian Luau Membership Drive Kick Off*



On August 1st, Norma Redford, Sherrie Burgess, Becky Barrick, Janis Turner, Georgia B. Albany, Betty Driver, Vonda Pace had the opportunity to appear on Janet Johnson program, Family Lifestyles, with WPBM Station out of Scottsville.



Great time at the Hawaiian Luau. Seven new members and raised \$660 for Community Care



Hawaiian Luau Committee



Shana McCrady, winner of hula contest



Winner
Brenda Kirk
Best dress



DR. Mody receives \$300 from BPW



*Featuring Book Club, Ashley's Baby Shower.
Nineteen Amendment, and Georgia Beth Albany*



The Book Club attending a movie, The Help



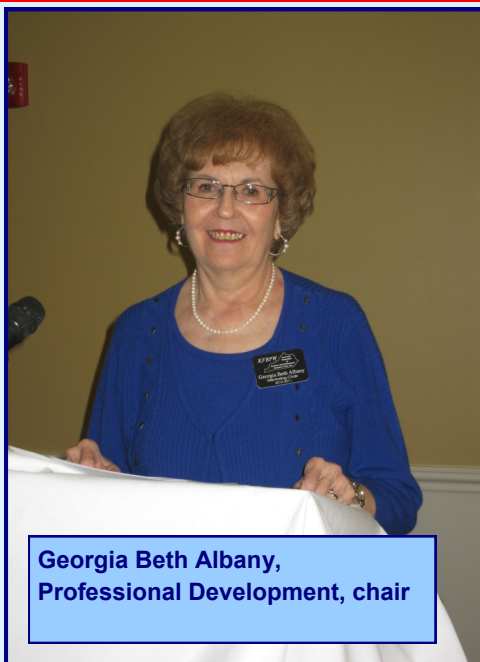
Ashley's Baby Shower



Voter's Registration Drive, Betty Driver & Joanne London



19th Amendment Celebration



Georgia Beth Albany, Professional Development, chair

When Georgia Beth Albany graduated from Western at the age of 47, she did three things: Bought a TV (she had given hers away because she didn't have time to watch it while working full-time and going to school), she bought a piano and started taking lessons again, and she joined Glasgow Business & Professional Women. Of these three, B&PW has provided the most benefits such as training, personal and professional development, leadership opportunities, and wonderful friendships. Within about 2 years, she was elected secretary, and the next year became president serving from 1988-1990. She became a widow at the age of 36 when her husband died suddenly of a heart attack. This stay-at-home Mom and her two daughters, ages 14 and 12, moved back to Glasgow, their hometown, and quickly became immersed in work, church, and school. Georgia Beth estimates that she drove or car-pooled about 30,000 miles to Western-this was before there was a Glasgow campus. She and both girls were in college at the same time for several years, and all three finished with degrees-smarter, maybe, but with far less money. Georgia Beth says, "When life hands us challenges, giving up is not an option. We have to move on." Georgia Beth appreciates B&PW for what it has meant to her, and she encourages others to join and take advantage of what it has to offer.